

**Sevenoaks District**

**Community Safety Partnership**

**Annual Action Plan**

**2018 - 2019 - DRAFT**



Introduction	Page 3
Priority issues 2018-19	Page 4
Success measures	Page 6
Domestic Abuse	Page 7
Organised Crime Groups	Page 10
Anti-Social Behaviour incl Environmental Crime	Page 12
Safeguarding including Young People, Vulnerable Adults, CSE, Modern Slavery, Human Trafficking, Prevent, Care Act, Missing Children and Gangs	Page 15
Acquisitive Crime	Page 18
Mental Health	Page 20
Substance Misuse	Page 22
Glossary	Page 25
Members of the Partnership	Page 26
Terms of reference	Page 27
Partnership structure	Page 28
Map of Sevenoaks District	Page 29

This publication is available in large print. For a copy call (01732 227414).

[www.sevenoaks.gov.uk](http://www.sevenoaks.gov.uk)

If you need help communicating with us or understanding this document, we can arrange for an interpreter to help you.

Please contact us on 01732 227000 stating your language and telephone number

## **Action Plan 2018-19**

### **Introduction**

The Sevenoaks District Community Safety Partnership brings together all of the agencies in the District who can have an impact on crime, anti-social behaviour and the fear of crime. A list of partners is set out on page 26. The Partnership has 3 key aims. They are to:

- Reduce and detect crime
- Reduce anti-social behaviour and the fear of crime
- Strengthen community involvement

Each year the Partnership, in common with all of the Community Safety Partnerships in Kent, undertakes an assessment of crime and disorder in the District, using data provided by partners and feedback from residents. The assessment identifies the priority issues for the next year using the following rationale for each community safety type:

- Whether there is significant community concern
- Whether there is an increasing trend
- Whether it contributes to a high volume of crime
- The level of harm it causes
- How well it is performing compared with other parts of Kent and similar partnerships nationally
- Whether the Partnership can add value to the work

**This Action Plan identifies where we can best work together to achieve results.**

## **Priority Issues for 2018-19**

The Strategic Assessment undertaken during the winter of 2017, identified seven priorities for the Partnership to tackle during 2018-19. The data referred to in this Action Plan is based on the Strategic Assessment, and uses data between 1 October 2016 - 31 September 2017, unless otherwise stated. Trends in the identified priorities continue to be monitored on a quarterly basis and the first monitoring will be available in July 2018. Crime types are compared with their “Most Similar Groups” a bench marking group set up by the Home Office, of partnerships thought to have similar characteristics.

The seven priorities, as ranked in the Strategic Assessment, are:

- Domestic Abuse
- Organised Crime Groups
- Anti-Social Behaviour incl Environmental Crime
- Safeguarding (incl Prevent, Gangs, Human Trafficking, Modern Slavery, CSE (Child Sexual Exploitation, Vulnerable Adults and Protecting Children)
- Acquisitive Crime
- Mental Health
- Substance Misuse

Although the Partnership’s main focus will be the seven priorities, it will continue to monitor and plan for trends in crime and other community safety issues and address them through the Community Safety Unit’s daily briefings and other tasking arrangements in order to reduce recorded crime.

### **The Action Plan**

The following pages set out the overall targets for the Community Safety Partnership. The Action Plan does not include details of the numerous activities already undertaken by partners, town and parish councils, the voluntary sector and others as part of their day to day work, but highlights activities in addition to core work, which partners will undertake throughout the forthcoming year. All priorities include actions around public perception and reducing repeat offenders/victims.

**Funding and monitoring**

Funding for the actions included within the Action Plan is available from a number of sources, including partners' own budgets, Police & Crime Commissioner's (PCC) funding which is allocated to district Community Safety Partnerships, Choosing Health funding and other small amounts of funding from a variety of sources.

Regular monitoring will take place to ensure that individual projects continue to deliver positive results as well as value for money and that this Action Plan is on target.

**Equalities**

In preparing the action plan, issues such as equality and diversity were considered to ensure that everybody feels safe in the District.

## SEVENOAKS DISTRICT COMMUNITY SAFETY PARTNERSHIP - ACTION PLAN 2018-19

### SUCCESS MEASURES

#### **All recorded crime**

All Victim Based Crime reduced compared with the previous year.

#### **Domestic Abuse**

Domestic Abuse Action Plan to be 80% on target

Work with agencies to reduce repeat victims

#### **Organised Crime Groups (OCGs)**

Create a baseline of OCG's

#### **Anti-Social Behaviour**

An improvement in behaviour achieved in 80% of cases accepted by the Anti-Social Behaviour Task Group.

75% of Anti-Social Behaviour victims satisfied with action taken.

#### **Safeguarding**

Deliver minimum of 4 training sessions on safeguarding topics

Determine a baseline figure for CSE, Prevent, Gangs, Human Trafficking and Modern Slavery cases in the District

#### **Acquisitive Crime**

Hold a minimum of four community sessions to address Burglary and Vehicle Crime

#### **Mental Health**

Set up a working relationship with Mental Health Service Providers

#### **Substance Misuse**

Deliver a minimum of three training sessions on Substance Misuse

## Domestic Abuse

Domestic Abuse has seen an increase in the number of incidents and in the number of repeat victims this year.

Domestic abuse is not a crime category within its own right, nor is it only a subset of Violence against the Person.

The Home Office definition is any incident or pattern of incidents of controlling, coercive, threatening behaviour, violence or abuse between those aged 16 or over who are, or have been, intimate partners or family members, regardless of gender or sexuality. The abuse can encompass, but is not limited to, psychological, physical, sexual, financial and emotional abuse.

Domestic abuse incidents in the Sevenoaks District have increased by 256 crimes (18.8%). The District has the lowest number of Domestic Abuse incidents (1621) <sup>1</sup>, From 1 October 2016 - 31 September 2017 there were 377 repeat victims ( 10 crimes, 2.72%). **Please note:** Domestic Abuse incidents are not always reported as violence against the person, if there has been no violence recorded. For example, if there was a verbal altercation, this would be recorded as a Domestic Abuse Incident and not Violence against the Person and that is why the numbers are different.

It is important to remember that these figures are only representative of domestic abuse that was reported to the Police and it is widely recognised that there remains a figure of domestic abuse which remains unreported. Kent figures for October 2016 - Sept 2017 rank Sevenoaks as lowest for rates of domestic abuse in the County. Kent Police figures indicate the rates of domestic abuse for Sevenoaks District have been the lowest in Kent for the past three years.

There have been no offences under the Female Genital Mutilation Act 2003 in the Sevenoaks District and none in the West division as a whole under the time period.

---

<sup>1</sup> Apparent inconsistency in annual figures arises from the classification of 'incident'. Domestic abuse 'incidents' are not necessarily violent and can refer to verbal disputes which have been reported to Kent Police; as such, not all incidents make it into statistics for violence against the person.

## Domestic Abuse

	Priority Action	Lead Agency	Other Partners	By When
1.1	Raise public and professional awareness of Domestic Abuse. Show the whole spectrum from control and cohesion to domestic abuse homicides	DAVSS Domestic Abuse Working Group KCC Commissioned Service	All Partners	On Going
1.2	Deliver Healthy Relationships programme to young people through schools and youth groups	DAVSS	CSU	On Going
1.3	Reduce repeat victimisation. Increase CDAP referrals through potential new pilot with Police	Kent Police CDAP CSU	Housing Associations SDC Housing & Health	On Going
1.4	Include standard, medium risk and repeat domestic abuse referrals in Community MARAC	Kent Police Mental Health Services KFRS KCC Services Housing Associations	CSU	April 2018
1.5	Provide a service for young people affected by Domestic Abuse	CSU Freedom Group Kent Police Specialist Children's Service	DAVSS	December 2018
1.6	Review of domestic abuse incidents on provision of support services (especially 16-18yr olds) include secondary incidents	Kent Police DAVSS Early Help Prevention	Domestic Abuse Working Group	June 2018



## Domestic Abuse

Domestic Abuse				
Priority Action		Lead Agency	Other Partners	By When
1.7	Work on Domestic Abuse campaigns throughout the year	CSU DAVSS	KCC Commissioning Service  Domestic Abuse Working Group	June 2018

## Organised Crime Groups

Organised Crime comes in many forms. Those involved in organised crime don't just commit serious crime, but local crime within the community, whose activities often feed into much more serious crime and serious violence.

Whilst we very rarely see serious violence and crime in this District, criminal activity locally could have these links to organised crime. Local drug dealers sell drugs trafficked into this country by violent criminal gangs who exploit the most vulnerable people in our society so as not to get caught themselves. A local car thief is likely to be selling what is stolen to fund their own drug habit. Someone breaking into a garden shed will be selling the items to other criminals higher up the chain, which then feeds into other much more serious crime.

Criminals behind organised crime often intimidate and create fear, which is intended to prevent the local community reporting what they see. Often the criminals behind this don't even have to try hard to do this - instead relying on word of mouth and reputation. Over the past year, Organised Crime has seen a more targeted approach by Partnerships. There are two OCGs within the Sevenoaks District - Barnfield Park in New Ash Green and Oak View Stud Farm in Horton Kirby. A new monthly meeting started in October 2017 to address OCGs and serious crime. The most common crime types associated with these groups is commonly organised theft.

## Organised Crime Groups

	Priority Action	Lead Agency	Other Partners	By When
2.1	Investigate information sharing and education via a communications protocol to include what part can you play to all agencies and staff	Kent Police	KFRS CSU Housing Associations	June 2018
2.2	Develop a partnership intel and referral form to measure against OCG Police national scoring matrix	CSU	Kent Police	April 2018
2.3	Community “personal” statement process to court services to prevent delays and streamline court process	Kent Police	CSU	June 2018
2.4	Through media campaigns and use of social media help address perception of Burglary and Vehicle Crime across the District. Work with residents and Town and Parish Councils	CSU	All Partners	March 2019
2.5	Work in Partnership to disrupt recognised OCGs and identify existing and emerging groups.	Police SCD	CSU All	On Going
2.4	Continue Partnership meetings around OCG’s and use the ethos of Protect, Pursue, Prevent and Prepare	CSP	All	On Going
2.5	Deliver training around OCG’s to frontline workers, schools and colleges	Police CSU		March 2017

## **Anti-Social Behaviour including Environmental Crime**

ASB accounts for the second largest recorded issue when compared to individual crime types in the District and makes up 20% of the total recorded figures when included in crime statistics. Figures show 1739 recorded incidents of ASB occurring within the District reported to Kent Police; The District had the 2<sup>nd</sup> lowest number of ASB reports in Kent, and saw a decrease of 14% (86 reports).

The Community Safety Unit (CSU) Daily tasking's meetings dealt with 685 ASB/Community Safety calls from October 2016 - September 2017. All actions were followed up and residents were kept updated in all actions unless they had reported anonymously. The CSU daily tasking is attended by SDC, Police, Community Wardens, West Kent Housing and SDC Environmental Heath on a daily basis and partners from KFRS and Moat Housing on a regular basis. ASB is most prominent community safety issue in the Sevenoaks District, (including environmental issues) and will continue to be a priority for the CSP.

The top wards reporting were in Swanley, Edenbridge and Sevenoaks. The top categories were intimidation and harassment. This is followed by reports of noise and then Nuisance Behaviour. Calls by type are always higher than reports received, as residents can report more than one type at a time.

The ASB Officer attends the daily tasking meeting within the CSU. Reports of anti-social behaviour to the District Council have reduced from **212 cases** Oct 15 -Sept 16 to **181 cases** Oct 16 -Sept 17, a reduction of 31 cases which equates to 14.62%. All calls were responded to and dealt with by the ASB Officer separately or with partner agencies when needed.

### **SDC CCTV**

From 1<sup>st</sup> October 2016 to 30<sup>th</sup> September 2017, the CCTV Control Room at Sevenoaks District Council assisted the police with 83 arrests for this period; this is an increase from the previous year of 66 arrests. The main reason for this is the improved staffing and operational professionalism and commitment of the CCTV team.

### **West Kent Housing**

West Kent Housing Association has received 503 complaints of anti-social behaviour for the period 1 October 2016 to 30 September 2017. This is an increase of 28% over the same period for the previous year. Increases in reported anti-social behaviour for the same period were identified in Alcohol Related, Condition of Property, Drugs / Substance Misuse and

Hate Crime with significant increases seen in Litter/ Rubbish / Fly tipping, Noise and Verbal Abuse. Noise Nuisance has seen a significant rise from 86 reported cases to 114, a rise of 68%.

### **SDC Environmental Health**

During the period 1<sup>st</sup> October 2016 to 30<sup>th</sup> September 2017, the Environmental Protection Team received 1282 complaints from members of the public in respect of areas such as noise, bonfires, accumulations of waste, vicious dogs, animal welfare, pests (rats and mice), invasive plants, dust and high hedges from residents of Sevenoaks. This is an increase from the previous year of 33.

Noise continues to be the single greatest area of concern and accounts for 46% of all service requests (586), an increase of 19 from 2015/16.

### **SDC Direct Services**

**Flytipping** has seen a slight rise this year for the period October 2016 - September 2017, 1508 reports of fly tipping (13.7% increase, 182 more reports). It is worth noting that an increase in reports does not necessarily indicate an increase in incidents, with often more than one report per incident. Since the Enforcement Officer role was established in July 2016, there has been one successful prosecution with a further three cases awaiting Court hearing. Five FPN's have been issued and six formal cautions.

**Abandoned vehicles** have increased over the last year, with 322 reports (24 more than same period last year, totaling 8%) Of these, 39 vehicles were genuinely abandoned and removed, compared with 51 vehicles for the same period the previous year. The low proportion of vehicles removed is primarily due to the majority of those reported still either being driven or declared SORN (Statutory Off Road Notice) and parked off-road.

### **Graffiti**

Graffiti reports to the Council have decreased by 33% (19 reports) this year, with 37 recorded incidents (incl offensive). There were 21 offensive graffiti reports between October 2016 and September 2017 all of which were removed within the 48 hour deadline set by Sevenoaks District Council. (This was eight less than same period last year).

## ASB incl Environmental Crime

	Priority Action	Lead Agency	Other Partners	By When
3.1	Increase number of prosecutions for fly tipping through camera deployment. Increase more Partnership and community action	SDC Direct Services CSU	KCC Wardens PCSOs Housing Assoc	March 2019
3.2	Develop working practices around information sharing with key partners	CSP	All Partners	March 2019
3.3	Build on existing Communications Protocol with a Social Media strategy	CSU	All Partners	March 2019
3.4	Increase number of referrals and partners buy in to Community MARAC	CSU Mental Health Services	Social Landlords All Partners	March 2019
3.5	Increased use of ASB Powers such as Closure Orders, Community Protection Notices and Criminal Behaviour Orders. Arrange training on the powers	Police Local Authority	CSU	March 2019
3.6	Investigate factors that cause locational ASB	CSP Town & Parish Councils	All Partners	March 2019
3.7	More work around nuisance dogs, dangerous dogs and dog fouling initiatives	SDC Environmental Health	CSU	March 2019
3.8	Continue to set up Task and Finish Groups to deliver a focused approach on reducing repeat ASB	CSU	All	March 2019

## **Safeguarding including Young People, Vulnerable Adults, CSE, Modern Slavery, Human Trafficking, Prevent, Care Act, Missing Children and Gangs.**

### **Counter Terrorism - Prevent Strategy**

The number of calls/ incidents recorded post London Bridge terrorist attack has risen. Reflecting an increased trust and confidence in the Police, increased alertness of communities and improved access to Police and partners has been made available. Levels of threat are very low in the District. There were three cases dealt with under Prevent Case Management (PCM) between 1 October 2016 - 31 September 2017. All were found to have no identifiable extremism concerns, but did have other vulnerabilities that needed action so were onward referred to the relevant partners.

### **Human Trafficking and Modern Slavery**

There were four offences reported to Police for Sevenoaks between 1 October 2016 - 31 September 2017.

### **Child Sexual Exploitation (CSE)**

According to Kent Police there have been eight reports of CSE in the Sevenoaks District, of which two arrests were made. The Community Safety Manager continues to be a CSE Champion for the CSP and District Council.

### **Gangs**

Gangs work and identification has risen throughout this year. A gangs meeting was held in May 2017 and partners identified what actions needed to be taken forward. These meetings are now held on a quarterly basis and includes joint operations on the train stations with British Transport Police. We know that gangs from South London are coming down on the train lines to Sevenoaks Station and then diverting to other areas of the County.

There have also been gang members identified in Swanley and Bat and Ball areas linking in with young people in the area who have been displaying ASB and could be vulnerable.

### **Young People and Vulnerable Adults**

From 14 September 2017, Kent Police changed their policing structure and with that incorporated dedicated PCSOs within the CSU to address Domestic Abuse, Vulnerable Young People and Vulnerable adults. Both adults and young people who are vulnerable are discussed in depth every two weeks within the CSU and also any potentially raised through the Police's concern list at the daily meeting.

There was a year-on-year decrease of young offenders in the criminal justice system. Data runs from 1 April - 31 March in 2015-16 there were 150 and in 2016-17 there were 70 a reduction of 47% (80 offenders).

The highest ward was Swanley White Oak with five offenders followed closely by Swanley Christchurch and Hartley and Hodsall Street each with four. Swanley St Mary's, Ash and New Ash Green had three (all these areas are close together in the northern part of the District, so could be linked). Brasted, Chevening and Sundridge, Edenbridge North & East, Farningham, Westerham and Crockham Hill, Horton Kirby and South Darenth all had two. There was one offender in the following wards: Hextable, Leigh and Chiddingstone Causeway, Otford and Shoreham and Sevenoaks Kippington.

There is no concrete data on vulnerable adults, but the KCC Community Wardens work with all known vulnerable adults in their areas. The new dedicated PCSO role that started in September 2017 will look at vulnerable adults in more details so more information will be provided next year.



**SAFEGUARDING (incl Prevent, Modern Slavery, Human Trafficking, Gangs, Vulnerable Adults and Children)**

	Priority Action	Lead Agency	Other Partners	By When
4.1	Multi-agency and voluntary organisations Prevent training to be reviewed and delivered and update Prevent action plan	CSU	KCC All Partners	June 2018
4.2	Targeted delivery on Child Sexual Exploitation and Safeguarding promote on social media with schools and parents	CSU Schools Early Help	Kent Police	September 2018
4.3	Promote Online Safety especially on Internet Safety day. More awareness and training around scams and cyber crime	CSP		September 2018
4.4	Audit of available training and initiatives around Internet Safety, Cyber Crime and Scams	CSU	KCC Early Help All Partners	June 2018
4.5	Work with Police to address Modern Slavery and Human Trafficking eg car washes, nail bars, pop up brothels. Address evidence based issues	Police SCD	CSU All	June 2018
4.6	Continue multi-agency working group around gangs and gather intelligence to take forward actions	Gangs Task Group	CSU Early Help Youth Justice Lead	On Going
4.7	Use Town and Parish Councils to publish messages in newsletters	CSU		April 2018

## **Acquisitive Crime**

Acquisitive crime consists of Burglary (Dwelling and Burglary Other Than Dwelling - BOTD) and Vehicle Crime (Theft of and Theft from - TOMV and TFMV). Although there have been rises and falls throughout the time period, the number of reported crimes are relatively low, but they do sit high in County and MSG comparisons. These types of crime have a high impact on the local community. Please note that in April 2017, Burglary Dwelling and BOTD was changed to Burglary Residential and Burglary Business and Community, so a full comparison from this change will not be available until April 2019.

There has been an increase of community concern around Burglary and Vehicle Crime. Burglary Dwelling (now Burglary Residential) has risen as well as Theft from Vehicle.

## Acquisitive Crime

	Priority Action	Lead Agency	Other Partners	By When
5.1	Police to liaise with CSU on Vehicle and Burglary crime on reducing repeat victims. CSU to extend daily tasking to address this crimes including reassurance visits and provide crime reduction devices	Kent Police CSU	KCC Wardens PCSOs Housing Assoc	April 2018
5.2	Work with the IOM Hub to reduce the number of repeat offenders for Burglary and Vehicle Crime ensuring that support is offered for offenders just released from prison.	Kent Police Kenward Trust	CSU West Kent Reducing Reoffending Group	April 2018
5.3	Work with Youth Offending Service and IOM on deterring young offenders from re-offending in burglary and vehicle crime	Police YOS	CSU	April 2018
5.4	Through media campaigns and use of social media help address perception of Burglary and Vehicle Crime across the District. Work with residents and Town and Parish Councils	CSU	All Partners	March 2019
5.5	Promote good arrests through Social Media including Twitter and Street Life	Police	CSU	On Going
5.6	North West Kent Crime Prevention Panel to attend village days/fetes across the District promoting home and vehicle security	CSU	Police KCC Community Wardens	April 2018

## **Mental Health**

Mental Health has proved a concern for the Partnership. Many issues that come throughout the priorities have a link to mental health. However Mental Health Services/Providers are not a key player in the CSU, but should be and that link needs to be made.

Data has been very limited on how many people with a form of mental health links into crime, ASB and safeguarding, but continues to be dealt with by agencies in silo and takes up a lot of time and resources. A Mental Health Working group was set up in May 2017 and works with partners to address issues. One action was to set up Community MARAC (Multi-Agency Risk Assessment Conference). This looks at all repeat offenders and victims to give a wider remit to include Mental Health. The first meeting was held on Wednesday 20 September.

From 1 April 2015 - 31 March 2016, 24 young people were sectioned an increase of 8 compared to previous year.

From 1 April 2015 - 31 March 2016, 617 over 18's were sectioned an increase of 67 compared to previous year.

## Mental Health Issues

	Priority Action	Lead Agency	Other Partners	By When
6.1	Identify early interventions such as Childhood Trauma, Homelessness and Veterans. Identify through GPs, Neighbourhood Watch, Schools and Partners	CCGs CSU - PCSO Specialists KCC Community Wardens Early Help & SCS	KFRS Schools Youth Service	March 2019
6.2	Develop an At Risk process to address repeat missing persons by more training and public engagement	Missing Child and Adults Teams CSP	All Partners	March 2019
6.3	Mental Health Training - agree training level for Sevenoaks District. Including looking at pathways	CSU	All Partners	March 2019
6.4	Investigate and work with Metal Health Working Group to gain funding and set up crisis cafes and crisis drop ins	CSU West Kent Mind CCGs	Kenward Trust DAVSS CGL and Addaction	March 2019
6.5	More engagement with schools around mental health especially addressing ASB and community safety concerns	CSP	Youth Services Police Youth Officer	March 2019
6.6	More engagement with older people with mental health services especially around ASB and community safety concerns	CSU KCC Community Wardens	Housing Associations	March 2019
6.7	Through the Community MARAC work with mental health services to help reduce the number of frequent callers	CSU Mental Health Services	All Partners	March 2019

## Substance Misuse

### Drugs

Drug offences are no longer recorded in the Victim Based Crime figures released by Kent Police. However, Kent Police has provided rolling data on Drug Offences and this has also seen a decrease of 24.8% (33 offences from 133 to 100).

1 September 2016 - 31 August 2017 there were 290 admissions relate to 253 individuals for mental and behavioural disorders due to psychoactive substance use (including alcohol and drugs) in the District. This is the second lowest figure in Kent, but an increase from last year.

### Illegal Highs

Illegal highs are substances that have similar effects to drugs like cocaine or cannabis. They are sometimes called club drugs or new psychoactive substances (NPS).

In 2016, a new Act came in making these substances illegal. Currently there is no baseline data for the Sevenoaks District.

### Alcohol

Until recently, alcohol misuse was measured using alcohol attributable hospital admission rates which have been increasing year on year on a District and County level<sup>2</sup>. It is generally felt that these rates no longer accurately reflect alcohol admission trends as some 'attributable' conditions have undergone massive rises in admission rates over recent years and this is only partly attributable to alcohol.

---

<sup>2</sup> Kent has seen a steady increase of alcohol related hospital admissions over the past ten years and alcohol remains the most common substance for those seeking treatment; this year (June 2012 to May 2013) hospital admissions for evidence of alcohol involvement by Blood Alcohol has seen a Countywide increase of 76 (8.2%). Sevenoaks has seen the sharpest rise in numbers during this period (45.5%, 25 additional residents), making a total of 80 alcohol related hospital admissions this year.

## **Commissioned Services**

Substance misuse treatment services in Sevenoaks District are provided by CGL, who are commissioned by Kent Public Health to deliver an integrated community drug and alcohol recovery service, offering integrated support to individuals across West Kent.

CGL work closely with a range of partner agencies to improve outcomes for substance misusers. Greensands, a supported housing project in Sevenoaks, is assisted by CGL through the provision of group work and peer support to residents for their substance misuse. A joint working programme has also been developed with Sevenoaks Area MIND to deliver CGL programmes on a weekly basis to Greensands residents and a bi-weekly drop in and referral service for MIND service users. This will facilitate better access to drug and alcohol services for these clients.

Addaction are commissioned by Public Health to deliver services to young people.

The CSP also funds Kenward Trust to deliver Substance Misuse Youth Services Tier 1 and 2. During this last year from 1st October 2016 to 30th September 2017, Kenward in the community have delivered youth and community outreach. The work involves connecting with young people in communities where ASB has risen due to substance misuse.

## Substance Misuse

	Priority Action	Lead Agency	Other Partners	By When
7.1	Hold a meeting to find out from the Commissioner what services have been commissioned and whether they are being accessed across the District	CSU	Early help & Social Care Mental Health Services	June 2018
7.2	Deliver outreach work to designated areas to address substance misuse using CSU reports, public health data and health hub information	Kenward Trust	CSU Schools Early Help	On Going
7.3	Session work to be delivered in schools and other intervention programmes	CSU Kenward Trust Addaction	All Partners	June 2018
7.4	Ask CCGs to consider aftercare for people admitted to A&E for substance misuse	CCG	CSU	June 2018
7.5	Horizon scanning for best practise for gangs around substance misuse	Police SCD	CSU All	June 2018
7.6	Work with ex-offenders as they re-join the community specifically linked to spice to stop spreading to young people	CGL Probation	CSU	June 2018
7.7	Deliver training on substance misuse including the Dark Web for partner agencies	CSU	Addaction	September 2018



## **GLOSSARY:**

ASB - Anti-Social Behaviour

CDAP - Community Domestic Abuse Perpetrators Programme

CSE - Child Sexual Exploitation

CSP - Community Safety Partnership

CSU - Community Safety Unit

DAVSS - Domestic Abuse Volunteer Support Services

KCC - Kent County Council

KCSB - Kent Children's Safeguarding Board

KFRS - Kent Fire & Rescue Service

LCPB - Local Children's Partnership Board

MARAC - Multi Agency Risk Assessment

MSG - A Group of Partnerships thought by the Home Office to have similar characteristics and used for benchmarking purposes

PCC - Police & Crime Commissioner

PCSO - Police Community Support Officer

SCS - Specialist Children's Services

SDC - Sevenoaks District Council

YOS - Youth Offending Service

## Membership of the Community Safety Partnership and contact details

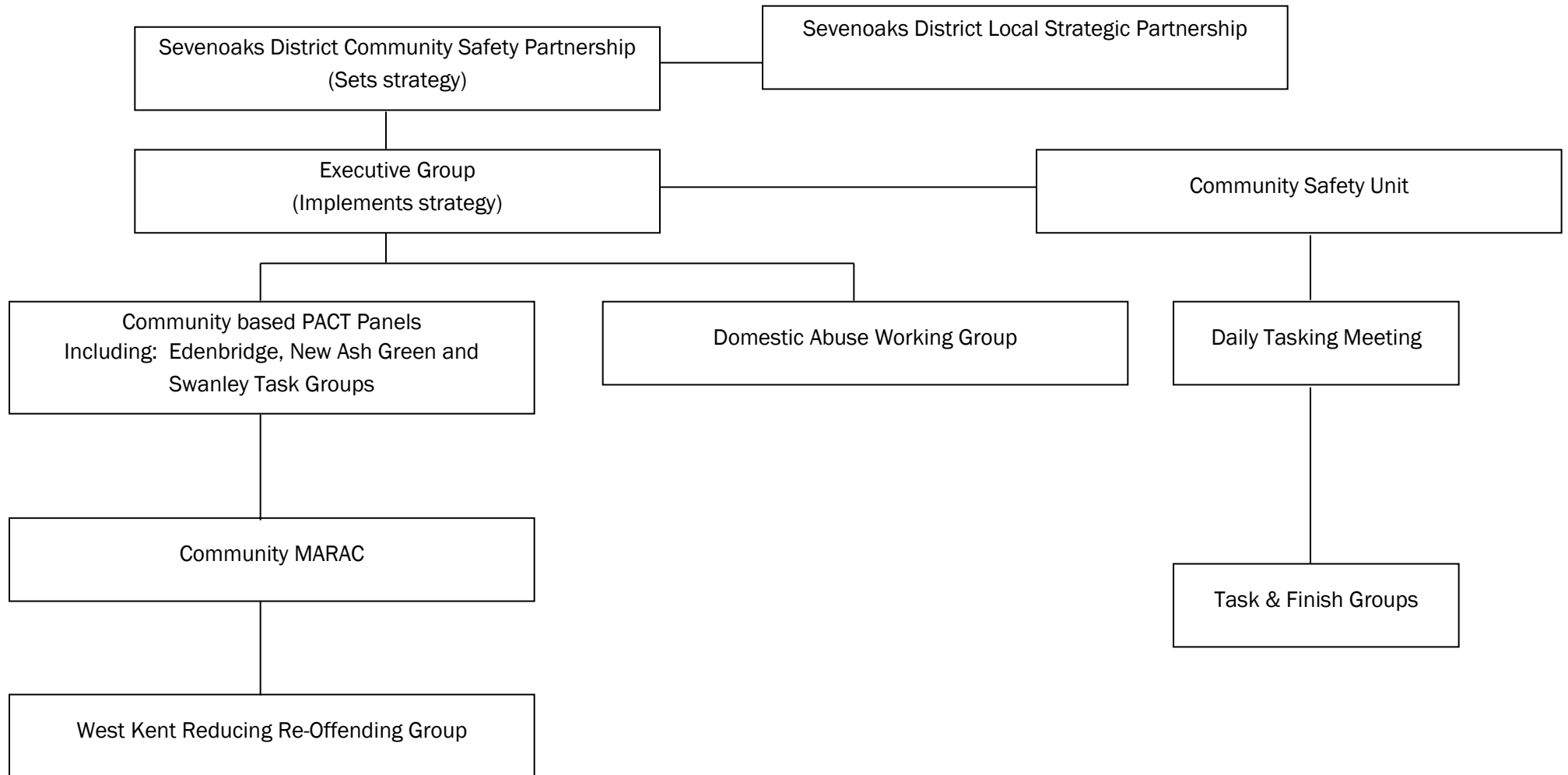
<b>Sevenoaks District Council</b> Argyle Road Sevenoaks Kent TN13 1GP Tel: 01732 227000 Web: <a href="http://www.sevenoaks.gov.uk">www.sevenoaks.gov.uk</a>	<b>Kent Police</b> 1 Pembury Road Tonbridge Kent TN9 2HS Tel: 01622 690690 Web: <a href="http://www.kent.police.uk">www.kent.police.uk</a>	<b>Kent Fire &amp; Rescue Service</b> West Group HQ Sevenoaks Fire Station London Road, Sevenoaks Tel: 01622 692121 Web: <a href="http://www.kent.fire-uk.org">www.kent.fire-uk.org</a>	<b>Police &amp; Crime Commissioner</b> Kent Police Headquarters Sutton Road Maidstone ME15 9BZ Tel: 01622 677055 Web: <a href="http://www.kentpa.kent.police.uk">www.kentpa.kent.police.uk</a>
<b>NHS West Kent CCG</b> Wharf House, Medway Wharf Road Tonbridge Kent TN9 1RE Tel: 01732 375200 Web: <a href="http://www.westkentpct.nhs.uk">www.westkentpct.nhs.uk</a>	<b>Kent Surrey and Sussex CRC Ltd</b> Maidstone Corporate Centre 3 <sup>rd</sup> Floor, Maidstone House King Street Maidstone Kent, ME15 6AW  Tel: 01622 239147 Website: <a href="http://www.ksscrc.co.uk">www.ksscrc.co.uk</a>	<b>KCC Social Services</b> The Willows, Hilda May Ave, Swanley Kent BR8 7BT Tel: 0300 041 1400 Web: <a href="http://www.kent.gov.uk">www.kent.gov.uk</a>	<b>Imago</b> 17-19 Monson Road Tunbridge Wells Kent TN1 1LS Tel: 01892 530330 Web: <a href="http://www.imago.org.uk">www.imago.org.uk</a>
<b>KCC Early Help &amp; Preventative Service</b> C/o Swanley Youth Centre St. Mary's Road Swanley Kent BR8 7BU Tel 01322 615275 Web: <a href="http://www.kent.gov.uk">www.kent.gov.uk</a>	<b>KCC Trading Standards</b> Public Protection 1st Floor, Invicta House, Maidstone, Kent ME14 1XX  Web: <a href="http://www.kent.gov.uk">www.kent.gov.uk</a>	<b>KCC Community Safety</b> KFRS Station Loose Road Loose Kent Web: <a href="http://www.kent.gov.uk">www.kent.gov.uk</a>	<b>West Kent Housing Association</b> 101 London Road Sevenoaks Kent TN13 1AX Tel: 01732 749400 Web: <a href="http://www.westkent.org">www.westkent.org</a>
<b>Kenward Trust</b> Kenward Road Yalding, Maidstone Kent ME18 6AH Tel: 01622 814187 Web: <a href="http://www.kenwardtrust.org.uk">www.kenwardtrust.org.uk</a>	<b>MOAT Homes</b> Galleon Boulevard Crossways Dartford Kent DA2 6QE Tel: 0300 323 0011 Web: <a href="http://www.moat.co.uk">www.moat.co.uk</a>	<b>West Kent Extra</b> 101 London Road Sevenoaks Kent TN13 1AX Tel: 01732 749400 Web: <a href="http://www.westkent.org">www.westkent.org</a>	

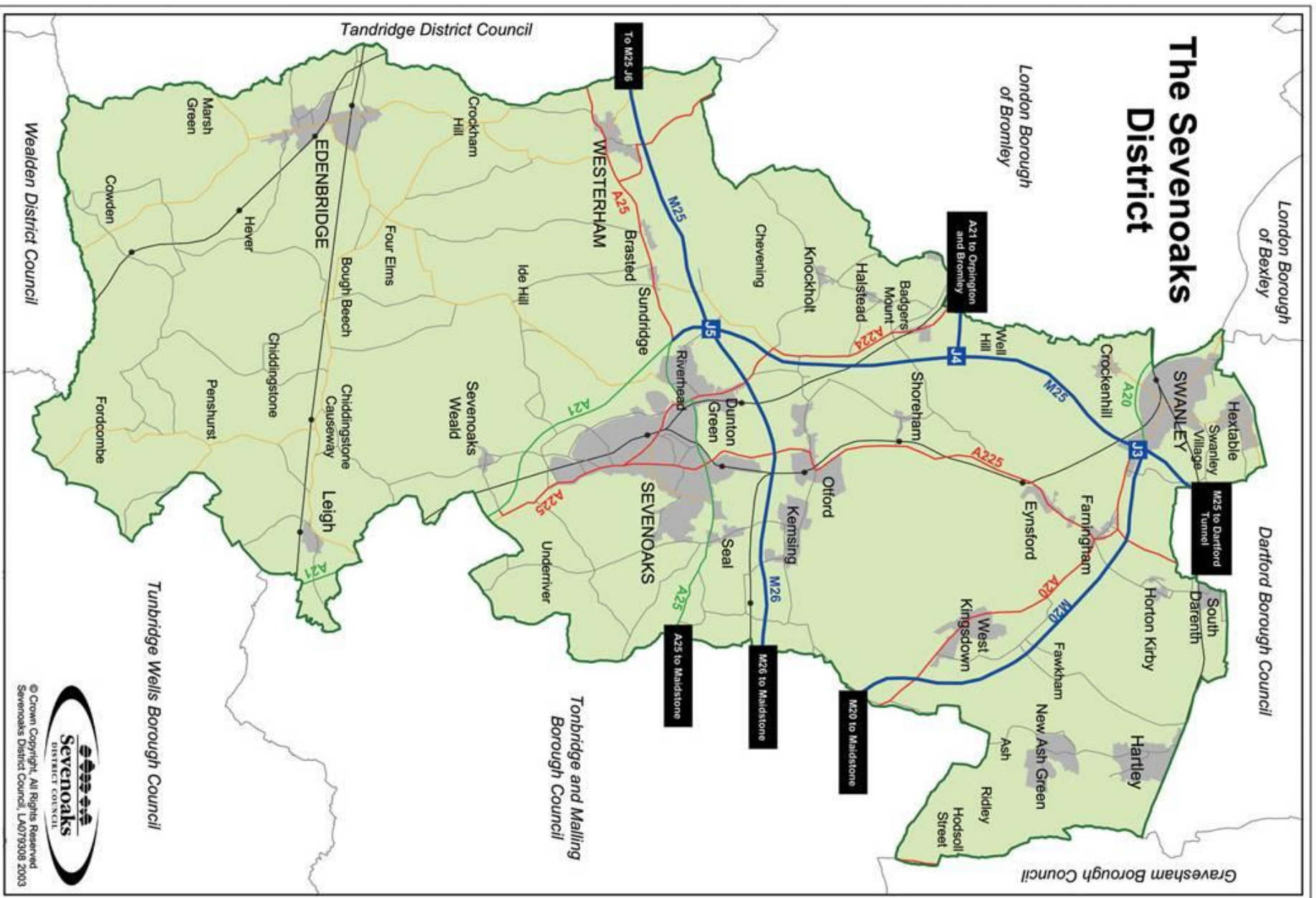
## **Terms of Reference**

**The Partnership's terms of reference are to:**

- Undertake periodic reviews of community safety in the District and disseminate the findings to the public
- Develop a yearly strategy and action plan to tackle community safety
- Monitor and report progress in meeting the agreed targets and actions
- Secure resources and funding from parent organisations and others for projects to address agreed shared priorities in the Community Safety Action Plan
- Act as a forum for discussion of topical local community safety issues and agree follow up actions if appropriate
- Promote community safety in the District in conjunction with other local organisations and bodies
- Co-ordinate and maintain an overview of all activities relevant to community safety in the District.

## Structure of Sevenoaks District Community Safety Partnership





**Enquiries to:**

Community Safety Manager  
Sevenoaks District Council  
PO Box 183, Argyle Road  
Sevenoaks, Kent TN13 1GP  
Telephone 01732 227000  
Fax 01732 742339  
Minicom 01732 227496  
E-mail [community.safety@sevenoaks.gov.uk](mailto:community.safety@sevenoaks.gov.uk)

